



## CORONAVIRUS BRIEFING: JANUARY 15, 2021

THE CENTRAL COMMUNICATIONS BRIEFING FOR THE TOWN OF WELLESLEY

Visit Wellesley's COVID-19 Information Hub at [www.wellesleyma.gov/coronavirus](http://www.wellesleyma.gov/coronavirus)

A sobering statistic today. Coronavirus was first detected in China just over a year ago. Since that time there have been more than two million COVID-19 related deaths around the world.

**Total confirmed COVID-19 cases in Massachusetts:** 438,371

[View the COVID-19 Interactive dashboard.](#)

**Total confirmed positive cases in Wellesley:** 737 (102 new cases in past 14 days)

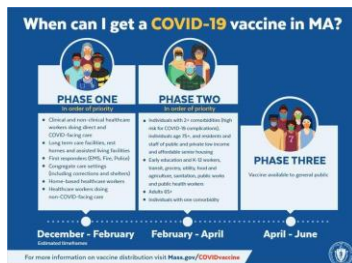
**Average Daily Incidence Rate/100,000 for Wellesley:** 24.5 (past 14 days)

**Percent Positivity of Testing:** 2.11% (past 14 days)

[View the Weekly COVID-19 Public Health Report.](#)

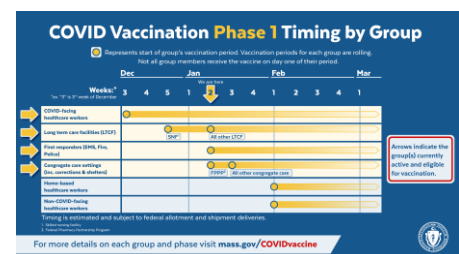
Wellesley is seeing an average of 10 to 12 COVID-19 cases per day, with the highest number of cases in individuals 18 years or younger. The majority of these cases are from household transmission. Our community remains in the Yellow (moderate) risk level. If you are concerned about situations that could increase the risk of exposure to COVID-19, please [email questions](#) or call the Health Department at 781-235-0135.

### COVID-19 Vaccine Update.



Wellesley Health officials began vaccinating first responders and COVID-faciling healthcare workers this week as part of Phase 1 of the vaccine rollout. We continue to receive questions about the COVID-19 vaccine, the tiered phases, and vaccination lists. As the rollout and Phases are coordinated by the State, please check the [Massachusetts COVID-19 vaccine webpages](#) frequently for new information, such as the updated Phase and Group chart.

The State released a map with locations and scheduling information for [individuals currently eligible to be vaccinated](#) in Phase 1. On Monday, January 18, a first responder vaccination site will open at Gillette Stadium. In the coming days, we anticipate the State will share more information on other sites and providers such as CVS and other pharmacies, physician offices, and hospital affiliated practices who can administer the vaccine, and the individuals they will be able to vaccinate.



Right now, our health officials only have enough vaccine doses for first responders and are not maintaining email lists for residents in other Phase 1 groups or those in other Phases. We may be able to do this in the future and are meeting frequently to discuss the logistics and infrastructure for needs for future clinics. We're also currently on-boarding health care volunteers who may help at these clinics.

## **Flu Vaccine Update.**

The Massachusetts Department of Public Health (MDPH) is no longer requiring flu shots for all students (from preschool through graduate school) this year. Health officials report a mild flu season in part because so many people were vaccinated and because people are wearing masks and staying socially distant due to COVID-19. The change is effective immediately and will allow more healthcare workers to focus on COVID-19 vaccine efforts.

## **Mental Health Chat.**

Join a virtual chat with the Health Department Social Workers on **Thursday, January 28th from 1:00-2:00 p.m.** We encourage you to practice self-care; please take part, share your concerns and get tips for dealing with stress. To register, please email your name and phone number to Senior Community Social Worker Joyce Saret at [jsaret@wellesley.ma.gov](mailto:jsaret@wellesley.ma.gov)

## **Paycheck Protection Program.**

The second round of the Paycheck Protection Program (PPP) opened on Friday, January 15 for businesses and non-profits who apply through community banks and credit unions. The program will open to all lenders and applicants on Tuesday, January 19. PPP is a forgivable loan program, established by the CARES Act, and part of the \$900 billion Federal stimulus package. Information for applicants is available from the [U.S. Small Business Administration](https://www.sba.gov).

**State grant application deadline is January 15.** Today is the last day to apply for grants administered through the Massachusetts Growth Capital Corporation. This money is part of the State \$668 million relief fund; applicants could receive up to \$75,000 but not more than three months of operating expenses. [Read specific details here.](#)

## **Congratulations to our Townsman 10!**

Each year *The Wellesley Townsman* profiles ten individuals or groups who were nominated by residents for the impact they've made in our community and beyond. We're thrilled to see Town, School and Health officials among the four profiles published so far (more profiles will be published next week.)

Congratulations to the [Wellesley Health Department, Select Board Chair Marjorie Freiman, Wellesley Public Schools COVID-19 Testing team,](#) and [WPS Superintendent Dr. David Lussier!](#)

-END-