



## CORONAVIRUS BRIEFING: JANUARY 29, 2021

THE CENTRAL COMMUNICATIONS BRIEFING FOR THE TOWN OF WELLESLEY

Visit Wellesley's COVID-19 Information Hub at [www.wellesleyma.gov/coronavirus](http://www.wellesleyma.gov/coronavirus)

**Total confirmed COVID-19 cases in Massachusetts:** 491,642

[View the COVID-19 Interactive dashboard.](#)

**Total confirmed positive cases in Wellesley:** 887 (131 new cases in past 14 days)

**Average Daily Incidence Rate/100,000 for Wellesley:** 31.5 (past 14 days)

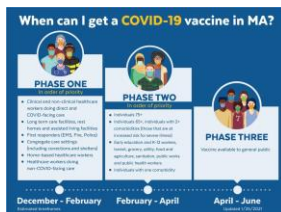
**Percent Positivity of Testing:** 1.59% (past 14 days)

[View the Weekly COVID-19 Public Health Report.](#)

The increase in COVID-19 cases in Wellesley is not unexpected as Health officials continue to see household transmission from the holidays. The increase in cases is also due to testing at our local colleges. Students are returning to campus and cases identified at both Babson and Wellesley Colleges are reported as Wellesley cases.

The good news is Wellesley's percent positivity rate (1.59%) remains low and has been so all month. This shows that testing in our community is keeping up with the level of disease transmission, the current restrictions in place are working, and there is not widespread infection in Wellesley. As more groups become eligible to receive the COVID-19 vaccine, officials hope to see a decline in case numbers. For now, all of us need to remain vigilant and continue to follow all of the COVID-19 guidelines including wearing masks, keeping our distance, and washing our hands.

### Vaccinations for 75+ Begin on Monday.



Residents ages 75 and up can receive the COVID-19 vaccine on Monday, February 1, IF they can get an appointment. The State has updated the [vaccine timeline](#) for Phase Two. Those 75+ are the first eligible group, followed by those 65+ and those with two comorbidities (at risk for severe illness from COVID). Pre-school and K-12 educators are among the third group in Phase Two.

Due to limited vaccine allocations from the State, residents are having extreme difficulties finding appointments at nearby vaccination sites. Vaccination locations and scheduling are listed on the [State COVID-19 vaccine map](#). Scheduling is done online and the process is complicated. See the State [list of Frequently Asked Questions](#) about the vaccine and the process.

The Health Department is also [offering suggestions](#) and reminding seniors (and family members) to practice patience. Everyone WILL get vaccinated – it will just take some time.

NO DATES ARE SCHEDULED YET for Wellesley community vaccination clinics. Health officials are not keeping lists of residents who need to be vaccinated. Vaccine doses are distributed by the State and we don't know if or when we will receive more doses. Once we have this information, we'll communicate it to all residents.

**Scheduling Help for Seniors.** The Council on Aging has recruited more than a dozen volunteers to help seniors with vaccine scheduling questions, transportation concerns, technology trouble, and other issues. Call **781-235-3961** or email [coa@wellesley.ma.gov](mailto:coa@wellesley.ma.gov) Volunteers are receiving a very high number of calls and will respond as soon as possible. **PLEASE NOTE:** We are aware that there may be a phone scam targeting seniors. If you receive a call from someone saying they are with the Centers for Disease Control (CDC) and are scheduling COVID-19 vaccines, PLEASE DO NOT give them any personal information.

IF YOU WOULD LIKE TO HELP OUT AS A VOLUNTEER, please email the COA volunteer coordinator Sally Miller at [smiller@wellesley.ma.gov](mailto:smiller@wellesley.ma.gov)

We are incredibly grateful for the many people who are volunteering their time at the Council on Aging, who have joined the [Medical Reserve Corps](#), and who have offered to help us with COVID-19 vaccine distribution and clinics. **THANK YOU!!**

### **Another Townsman 10 Honoree!**

Each year *The Wellesley Townsman* profiles ten individuals or groups who were nominated by residents for the impact they've made in our community and beyond. This week's profile featured [Town Clerk KC Kato](#). Congratulations!

-END-