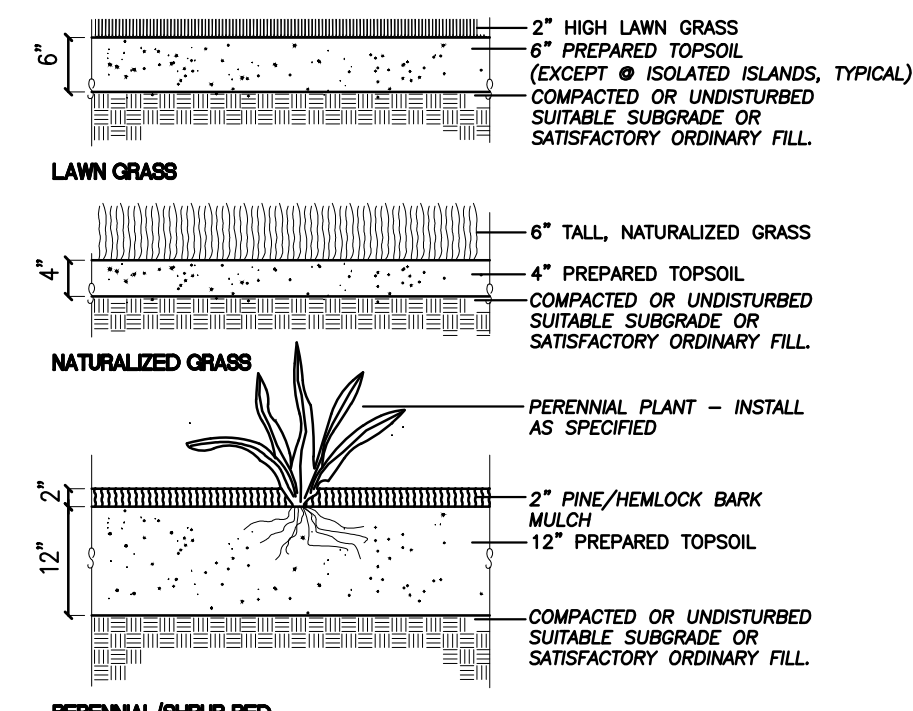
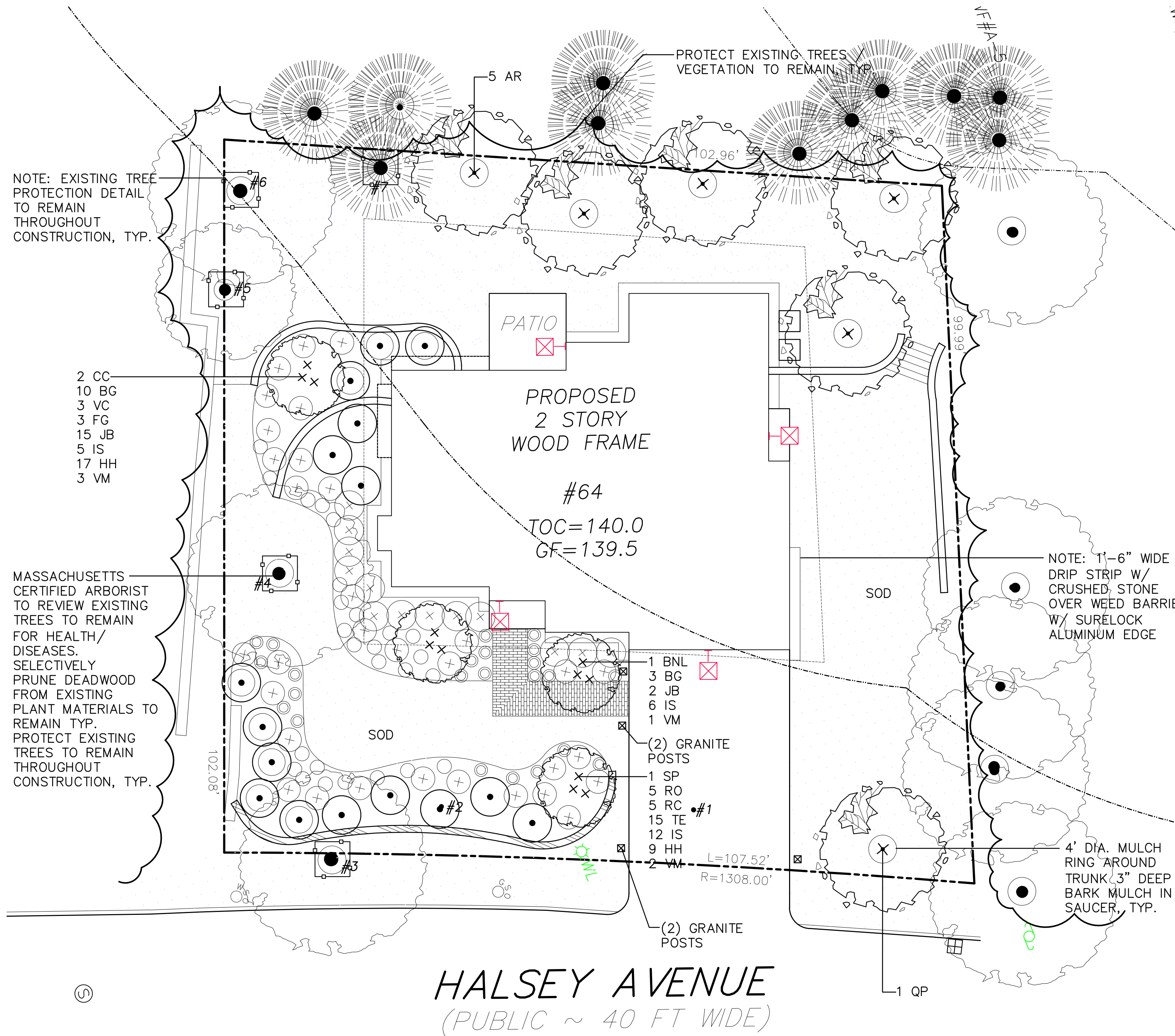


EXISTING TREE LIST TO BE REMOVED:

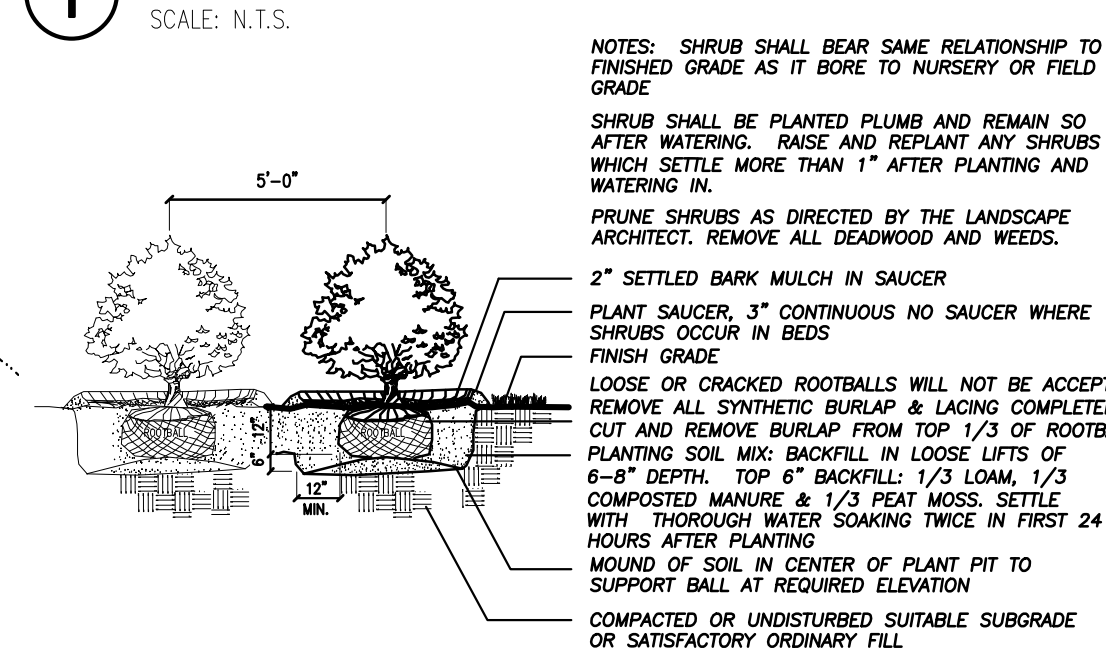
- #1 9" DECIDUOUS, -- FEET TALL
- #2 8" DECIDUOUS, -- FEET TALL

EXISTING TREE LIST TO REMAIN:

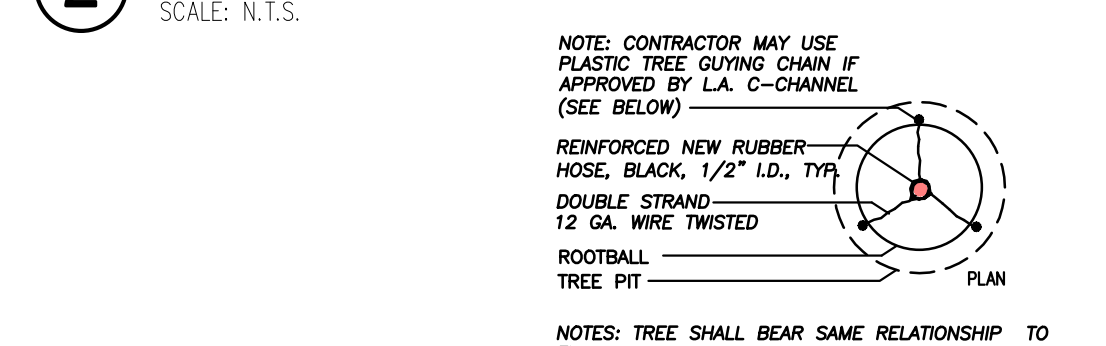
- #3 TOWN TREE
- #4 22" MAPLE, -- FEET TALL
- #5 20" DECIDUOUS, -- FEET TALL ** SHARED WITH NEIGHBOR
- #6 24+" DECIDUOUS, -- FEET TALL (NRC JURISDICTION)
- #7 24+" CONIFEROUS, -- FEET TALL (NRC JURISDICTION)
- TREES #8-22 ALL ON TOWN PROPERTY



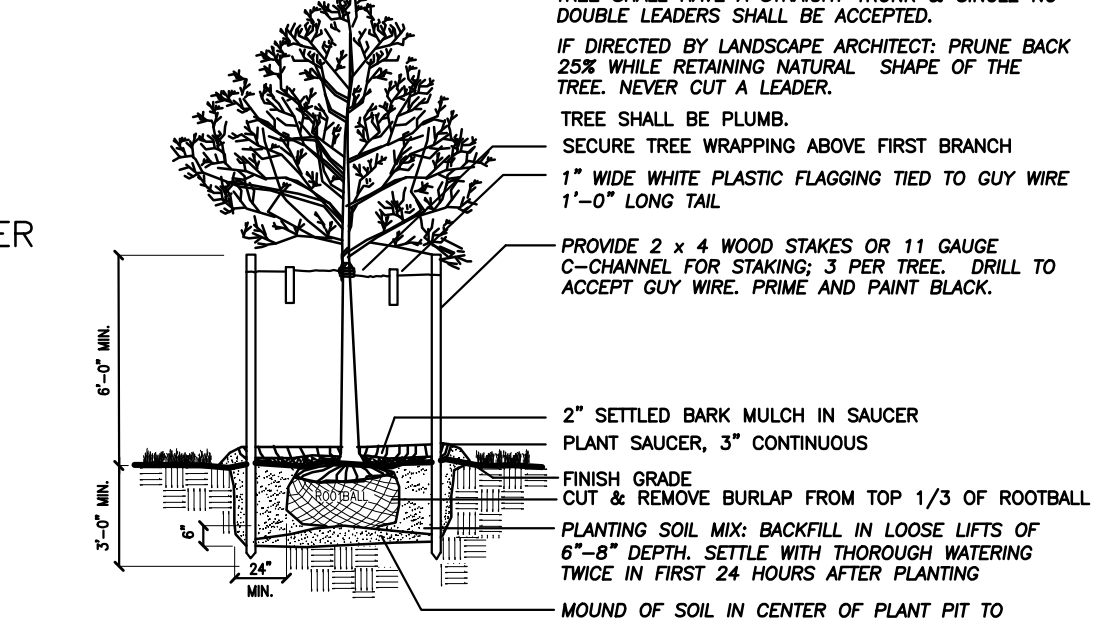
1 PERENNIAL, LAWN + NATURALIZED GRASS



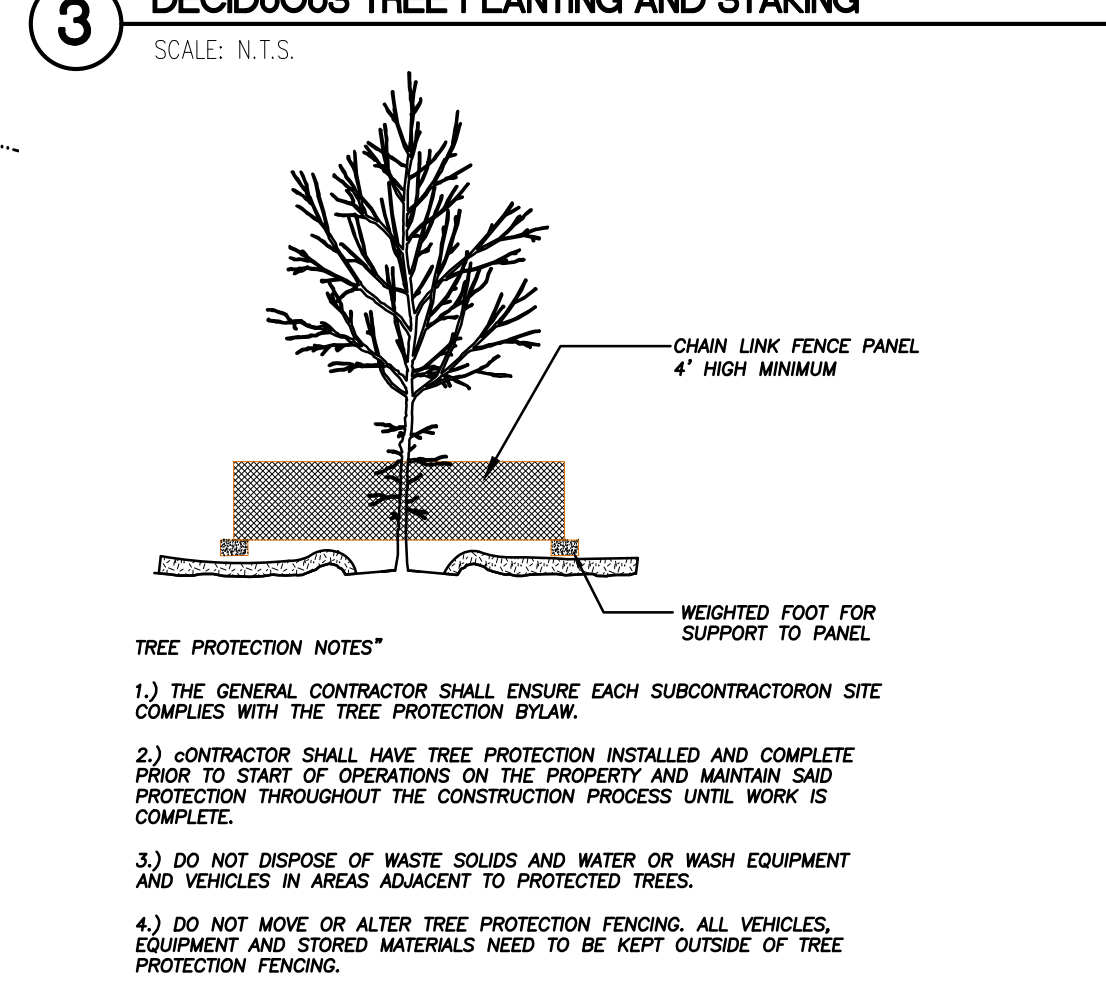
2 TYPICAL SHRUB PLANTING



3 DECIDUOUS TREE PLANTING AND STAKING



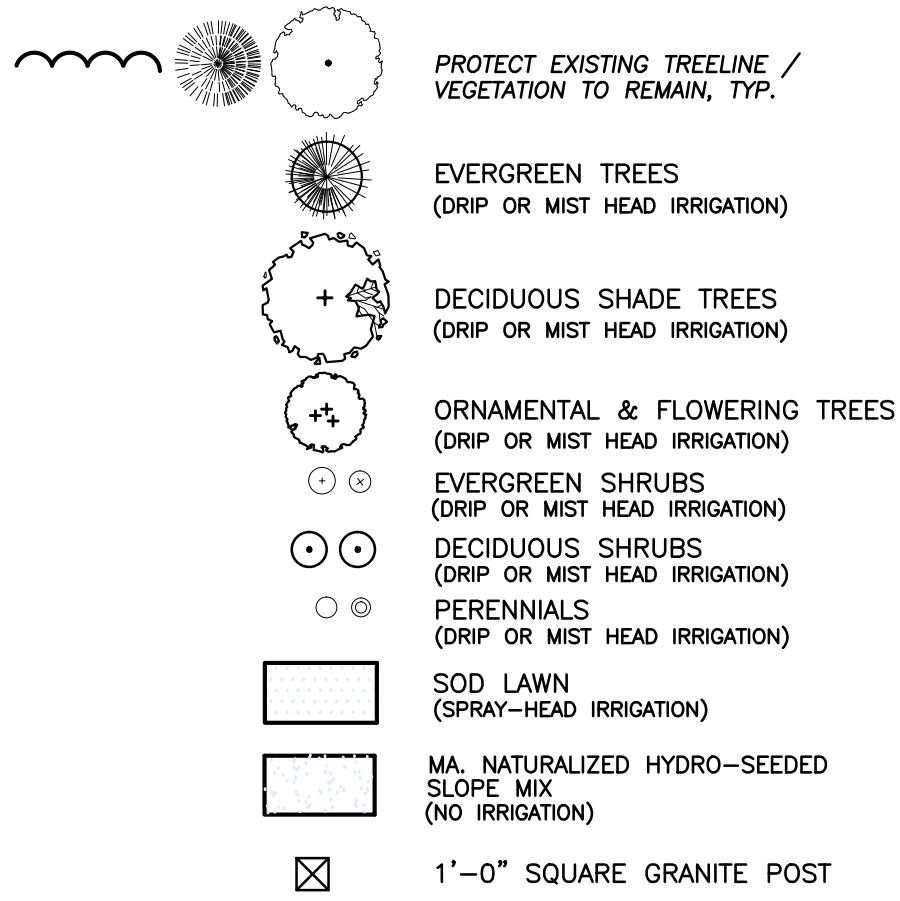
4 EXISTING TREE PROTECTION DETAIL



PLANT MATERIAL LIST - 64 HALSEY ROAD, WELLESLEY, MA.

SYM.	QTY.	BOTANICAL NAME	COMMON NAME	SIZE	ROOT	REMARKS
DECIDUOUS AND ORNAMENTAL TREES						
BNL	1	BETULA NIGRA 'LITTLE KING'	LITTLE KING RIVER BIRCH	8'-10'	B&B	(3) STEM TIGHT CLUMP
CC	2	CERCOS CANADENSIS	EASTERN REDBUD	8'-10'	B&B	SINGLE STEM SPECIMEN
AR	5	ACER RUBRUM	RED MAPLE	3'-3 1/2"	B&B	SINGLE STEM SPECIMEN
SP	1	STEWARTIA PSEUDOCAMELLIA	JAPANESE STEWARTIA	2 1/2"-3"	B&B	SINGLE STEM SPECIMEN
QP	1	QUERCUS PALUSTRIS	PIN OAK	3'-3 1/2"	B&B	SINGLE STEM SPECIMEN
SHRUBS						
FG	3	FOTHERGILLA GARDENII	DWARF FOTHERGILLA	2 1/2'-3'	B&B	
BG	13	BUXUS 'GREEN VELVET'	GREEN VELVET BOXWOOD	2 1/2'-3'	B&B	
RC	5	RHOODODENDRON 'CUNNINGHAM WHITE'	CUNNINGHAM'S WHITE RHODY	2 1/2'-3'	B&B	
RO	5	RHOODODENDRON 'OLGA MEZITT'	OLGA MEZITT RHOODODENDRON	2 1/2'-3'	B&B	
JB	17	JUNIPERUS H. 'BAR HARBOR'	BAR HARBOR JUNIPER	#3	CAN	
TE	15	TAXUS x MEDIA 'EVERLOW'	EVERLOW YEW	#3	CAN	
VC	3	VIBURNUM CARLESII	KOREANSPICE VIBURNUM	3'-4'	B&B	
PERENNIALS, ORNAMENTAL GRASSES & GROUNDCOVER						
HH	26	HEMEROCALLIS 'HAPPY RETURNS'	HAPPY RETURNS DAYLILLIES	1 GAL	GAL	YELLOW
IS	23	IRIS SIBERICA 'CAESAR'S BROTHER'	CAESAR'S BROTHERS IRIS	1 GAL	GAL	PURPLE
VM	7	VINCA MINOR	MYRTLE	FLAT	FLAT	(50) INDIVIDUAL PLANTS PER FLAT

GRAPHIC LEGEND



LANDSCAPE NOTES:

- LOAM DEPTHS SHALL BE AS FOLLOWS:
 - A. SOD AREAS - 6" ROLLED THICKNESS
 - B. PLANT BEDS - 1'-0" LOAM DEPTH IN THE PLANTED AREA WITH 2" MULCH.
 - C. NATURALIZED GRASS AREAS - 4" ROLLED THICKNESS, MIN.
- SOD BLEND (SODCO INC, SLOCOM, RI.) BLACK BEAUTY BLEND MIXTURE FOR SUN/SHADE:
 - 24% Golconda Tall Fescue
 - 20% Dorado Tall Fescue
 - 20% Montana Tall Fescue
 - 10% Deep Blue Kentucky Bluegrass
 - 10% Madison Kentucky Bluegrass
 - 5% Singular Perennial Ryegrass
 - 5% Frontier Perennial Ryegrass
 - 1% Inert Matter
- NATURALIZED GRASS SEED (VALLEY GREEN SEED, LTD. WILMINGTON, MA.) MA. STANDARDS SPECIFICATIONS FOR HIGHWAYS & BRIDGES, CURRENT EDITION; HIGHWAY SLOPE GRASS FOR SLOPES & SHOULDERS: CREEPING RED FESCUE, KENTUCKY 31, DOMESTIC RYE, RED TOP

GENERAL NOTES:

- CONTRACTOR SHALL MAKE A SITE VISIT PRIOR TO BIDDING TO EXAMINE EXISTING CONDITIONS FOR THEMSELVES. CONTRACTOR TO FAMILIARIZE THEMSELVES W/ DESIGN DOCUMENTS NOTES & DETAILS AND THE MASSACHUSETTS DEPARTMENT OF PUBLIC WORKS STANDARD SPECIFICATIONS FOR HIGHWAYS AND BRIDGES, CURRENT EDITION.
- CONTRACTOR SHALL NOTIFY / COORDINATE WITH THE TOWN OF WELLESLEY. PRIOR TO PLANT MATERIAL INSTALLATION.
- CONTRACTOR SHALL COORDINATE WITH THE TOWN OF WELLESLEY.
- PRIOR TO THE PRE-CONSTRUCTION MEETING THE CONTRACTOR SHALL CONTACT DIG SAFE @ 1-888-344-7233 TO HAVE THE EXISTING UTILITIES MARKED.
- All contractors shall inspect site prior to bidding to verify existing conditions for themselves.
- The Contractor shall supply all plant material in quantities sufficient to complete the planting shown on the drawings. See specification.
- All plant material shall conform to the guidelines established by "The American Standard for Nursery Stock", published by the American Association of Nurserymen, Inc. ANSI Z60.1-Current Edition.
- All plants to be balled in burlap or container grown. No plastic burlap.
- All plants to be approved by the Landscape Architect.
- Stake location of all proposed plant material for approval of Landscape Architect prior to commencement of planting.
- The landscape contractor shall guarantee all plant materials for one (1) full year from date of acceptance.
- Heal all construction scars with naturalized grass, lawn or mulch as indicated by drawings and/or as directed by Landscape Architect.
- "Dry Roots" shall be added to all new tree planting pits. All new loam shall be tested and amended as stated in the loam report. Provided by loam supplier.
- Landscape Contractor shall submit a watering schedule program for the (60) day maintenance period for review by the Landscape Architect & to Owner for all proposed plant material.
- Protect existing plant material within construction limits. Provide watering program for all proposed plant material during construction.

GENERAL IRRIGATION NOTES:

- The design/build irrigation sub-contractor shall provide a complete system for the irrigation areas shown on the plan, which includes new and existing transplanted plant materials. Shop drawings shall be provided at a suitable scale to illustrate that the designated plant materials will be irrigated by either spray heads, mist heads or drip irrigation tubing.
- Irrigation to be coordinated with General Contractor to locate the necessary PVC sleeving to complete irrigation program.
- All lawn areas shall be spray head irrigated. The heads shall be located for head to head coverage with absolutely no over spray onto the pavement.
- All trees, shrubs and ground cover shall be drip irrigated / irrigated with shrub mist heads.
- The irrigation layout and all of the components shall conform to the specifications. The specifications call for shop drawings to be submitted for approval, as well as conformance to the materials specified.
- The Contractor shall be extremely careful during the installation process not to disturb new or existing plant materials. The Contractor is to coordinate his work with other sub-contractors. Sleeving under pavements must be available and in the proper location prior to paving.
- The Irrigation Contractor shall conform to any local codes or ordinances that may be required to complete the work.
- This irrigation alternate shall include the cost of connecting to either the building water mains down stream of the back flow preventer of the irrigation well.
- The irrigation contractor shall test water source for water quality including minerals that may cause staining of concrete and granite pavement and curbs.
- Irrigation Contractor shall coordinate with the Town of Wellesley for irrigation requirements prior to shop drawing preparation.

RECORD OWNER: CAPITAL GROUP PROPERTIES
259 TURNPIKE ROAD, SUITE 100
SOUTHBOROUGH, MA 01772

REV. NO.	DATE	REVISION	MADE BY	CHKD BY	APPD BY
0	02/22/21	ISSUED FOR REVIEW	WFF	WFF	WFF
0	01/21/21	ISSUED FOR REVIEW	WFF	WFF	WFF
0	01/04/21	ISSUED FOR REVIEW	WFF	WFF	WFF
0	11/09/20	ISSUED FOR REVIEW	WFF	WFF	WFF
0	10/08/20	ISSUED FOR REVIEW	WFF	WFF	WFF

PREPARED BY:
Field Resources, Inc.
LAND SURVEYORS

P.O. BOX 324
AUBURN, MA 01532 4332
817 444 5936
fieldresources@hotmail.com

PREPARED BY:
WILLIAM FLEMING ASSOCIATES
INCORPORATED

LANDSCAPE ARCHITECTURE
PLANNING

315 MAIN ST.
SUITE #3
SPRINGFIELD, MA 01103
781 438 0808
781 438 9011
E wfleming@williamfleming.com

DRAWING TITLE:
LANDSCAPE PLAN
64 HALSEY ROAD

PREPARED FOR:
CAPITAL GROUP PROPERTIES
259 TURNPIKE ROAD, SUITE 100
SOUTHBOROUGH, MA 01772

SCALE: 1" = 10'
DATE: OCTOBER 08, 2020
SHEET: 1 OF 1
PLAN NO.:

PROJECT TITLE:
SITE DEVELOPMENT
64 HALSEY ROAD
WELLESLEY, MASSACHUSETTS

SHEET NO.:
L-1

