

Redistricting Revisions

Presented to the Select Board by the Town Clerk

November 22, 2021



Background

- Select Board voted precincts 10/12/2021 to meet the 2020 Federal Census data
- Wellesley notified on 11/19/2021 by State Census Division of redistricting changes by the Massachusetts Legislature
- Legislature process different from historical
 - Legislature developed maps independently of local process
 - Congressional districts voted and awaiting Governor's approval
- Final local revisions must be approved by the Local Election District Review Commission by 12/15/2021



State Final Districts

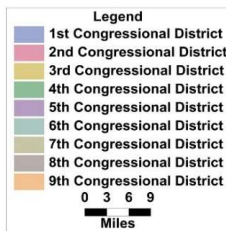
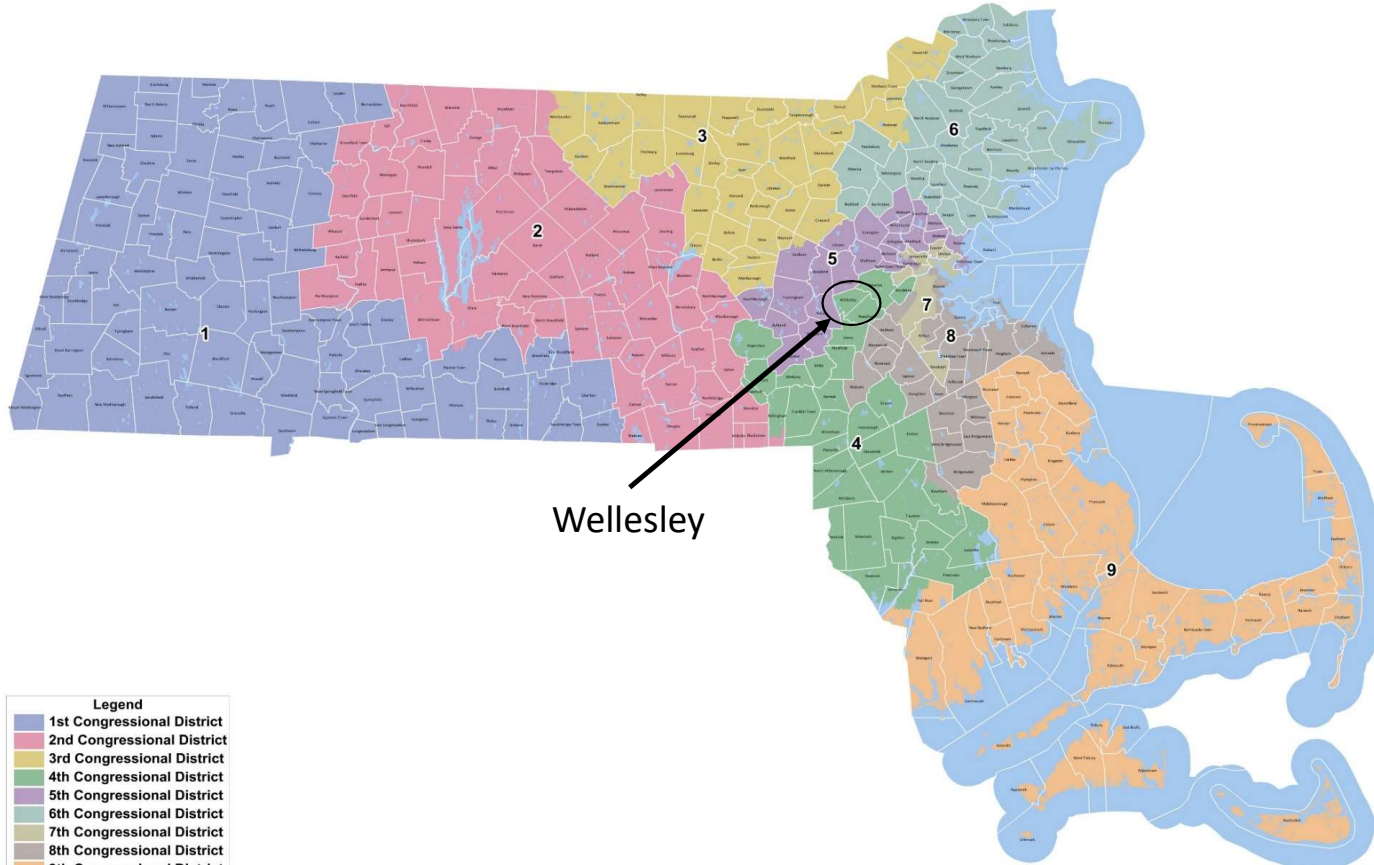
	Precincts
House – 14 th Norfolk	ALL
Senate – Norfolk and Middlesex	ALL
Governor's Council – 3	ALL
Congressional District – 4	Precincts E and F
Congressional District – 5	Precincts A, B, C, D, G, and H





The Commonwealth of Massachusetts
Congressional Districts
Chapter 177 of the Acts of 2011

Current Congressional Districts



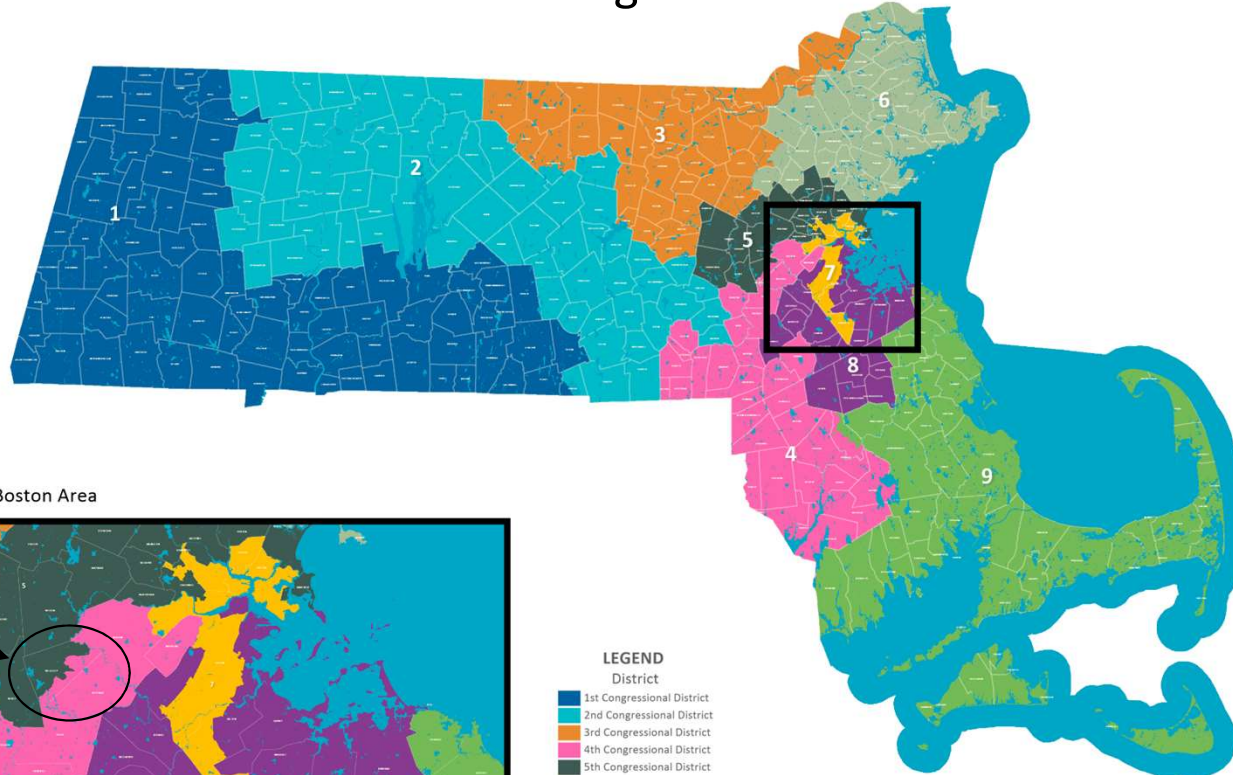


2021 Congressional Districts

Special Joint Committee on Redistricting



NEW Congressional Districts



Boston Area

Wellesley

LEGEND

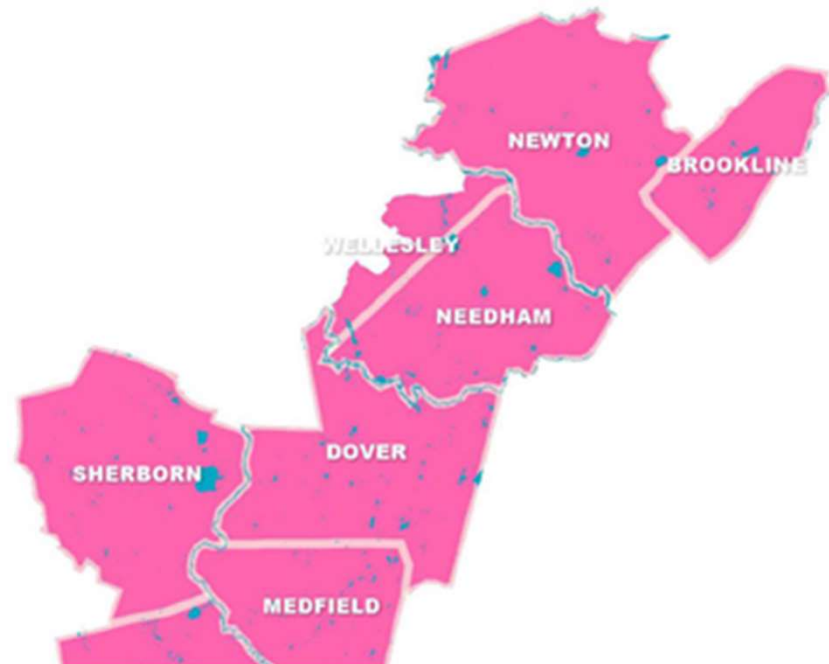
District
1st Congressional District
2nd Congressional District
3rd Congressional District
4th Congressional District
5th Congressional District
6th Congressional District
7th Congressional District
8th Congressional District
9th Congressional District

NEW Congressional Districts

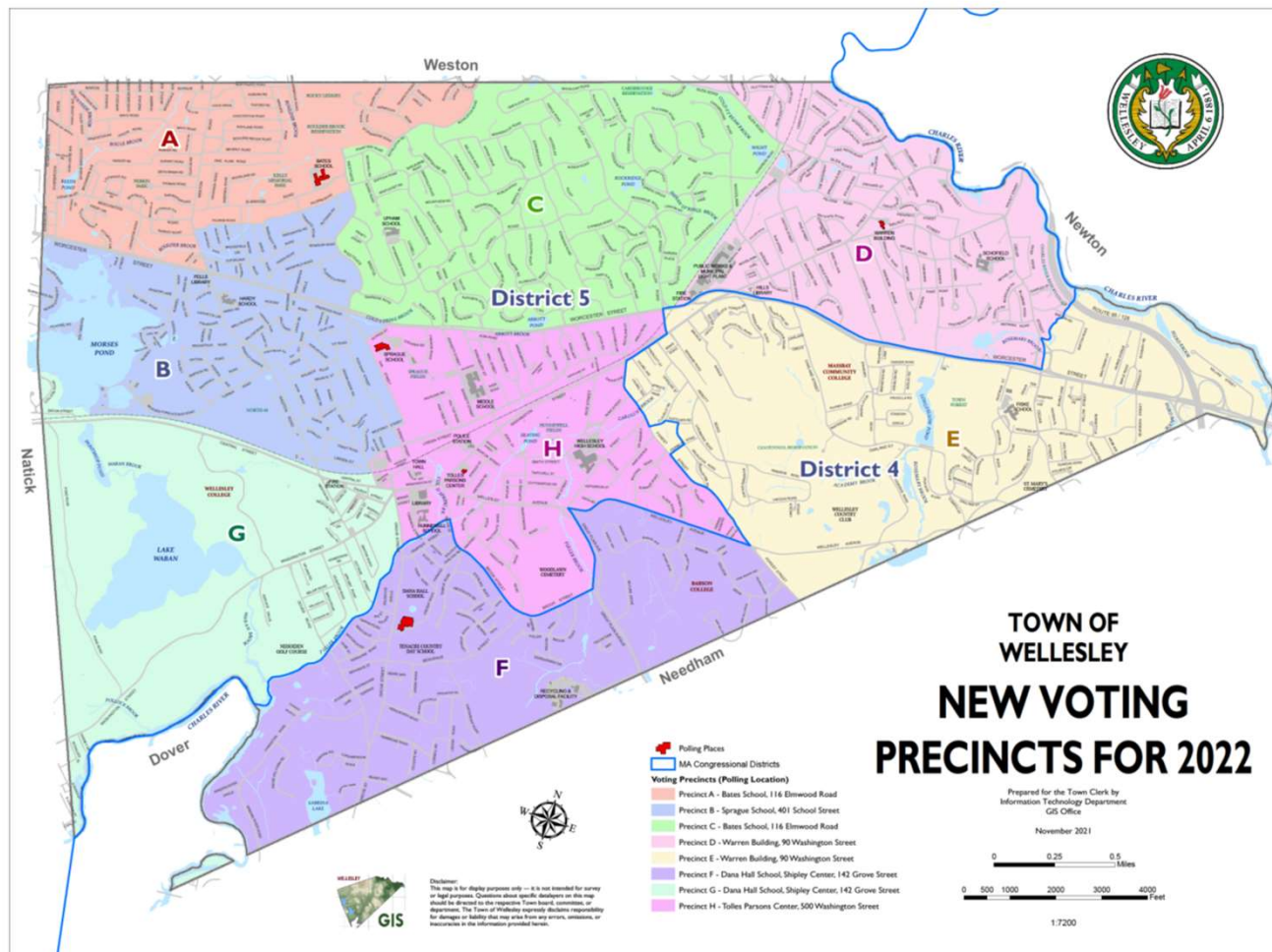
5th Congressional District



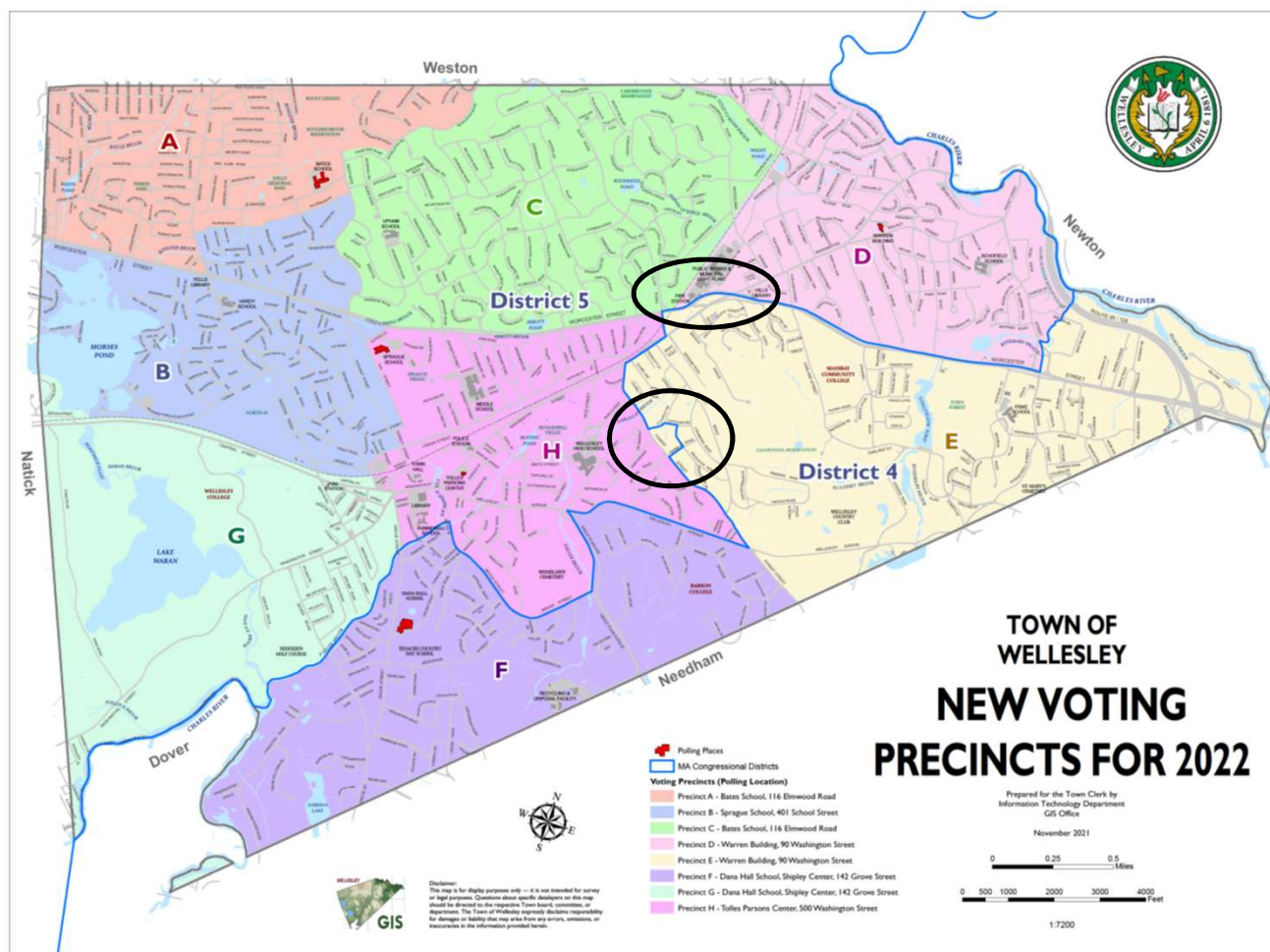
4th Congressional District



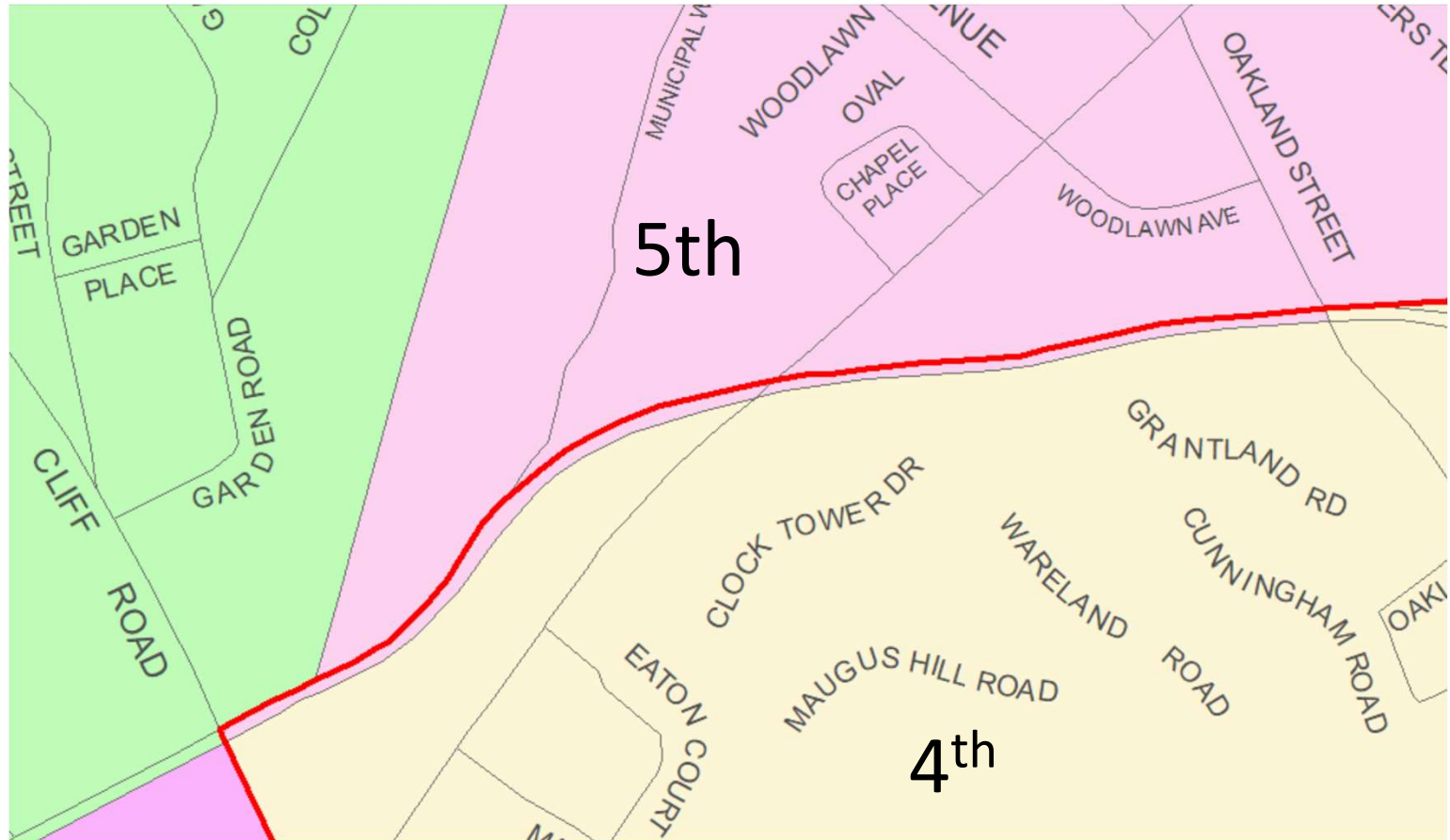
NEW Congressional Districts



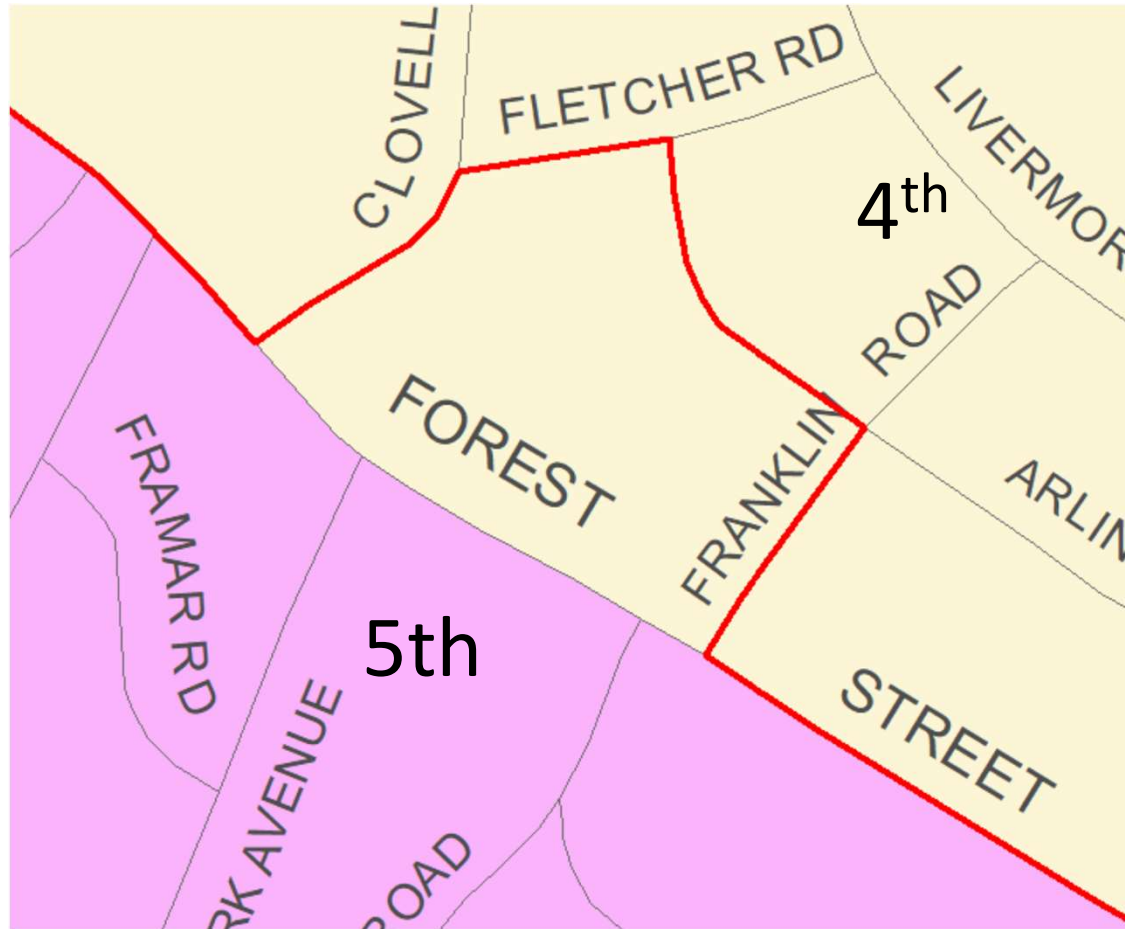
NEW Congressional Districts



NEW Congressional Districts



NEW Congressional Districts



Recommendation

- Revise Precinct E to align with Congressional Map
 - Shift block from E to H (41 residents)
 - Shift block from E to D (0 residents)
- Reduces voter confusion
- Ease of elections operations
- Combines block in larger precinct (32 voters)

...Will require all Town Meeting Members from Precincts B, C, D, E, G, H to run in the Annual Town Election

... Precincts A and F lines are unchanged



Congressional District Realignment Meets State Requirements (within +/- 5%)

Precinct	Pop. 2020	AVG	Change from 2020 10/12/21 Vote
A	3,598	-2.6%	-
B	3,864	4.6%	-
C	3,754	1.6%	-
D	3,710	0.4%	-
E	3,612	-2.2%	(41)
F	3,751	1.5%	-
G	3,641	-1.4%	-
H	3,620	-2.0%	41
Total	29,550		
Average	3,694		



Next Steps

- Post on the website
- Vote 12/6/2021
- Submit to the LEDRC 12/7/2021
- Mailing to all Town Meeting Members who will need to run
- Mailing to all affected households of new precinct and voting location

