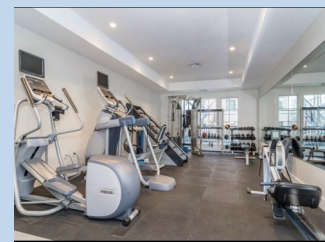
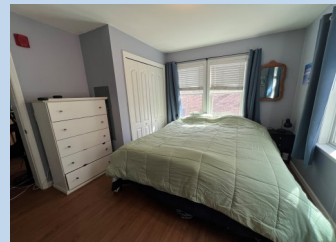


First Comes First Served. Affordable one bedroom modern condo in Wellesley Center.

\$ 267,306



53 Grove Street unit1 | The Belclare | Wellesley | MA | 02482

First comes first served! Affordable and deed restricted alternative to rent. Luxurious lifestyle at The Belclare, Beautiful open one bedroom corner unit. Laminated floors, stainless steel appliances (all stay), One car outside parking. Center of town with excess to public transportation. shops, and fabulous restaurants, : **To qualify:** first time home buyer with some exclusions (see application). Max house holdside gross annual income: one person-\$91,200; 2-\$104,200; Max liquid assets \$75K. Must be approved for a fixed mortgage. VA and FHA do not accept deed restriction. Application and preapproval required as first step. **Sell contingent on seller finding substitute housing**

- 745 SF of living
- Condo fees: \$149
- Taxes \$1,624(2025)
- 1 out side parking
- Condo fees include: gym.



Avi Glaser

OMEGA VENTURES INC.,

Tel: 617-970-2403
E-mail: aviglaser@comcast.net
Web: www.myfirsthome.info