

# DIRECTOR'S REPORT FOR DECEMBER 2025

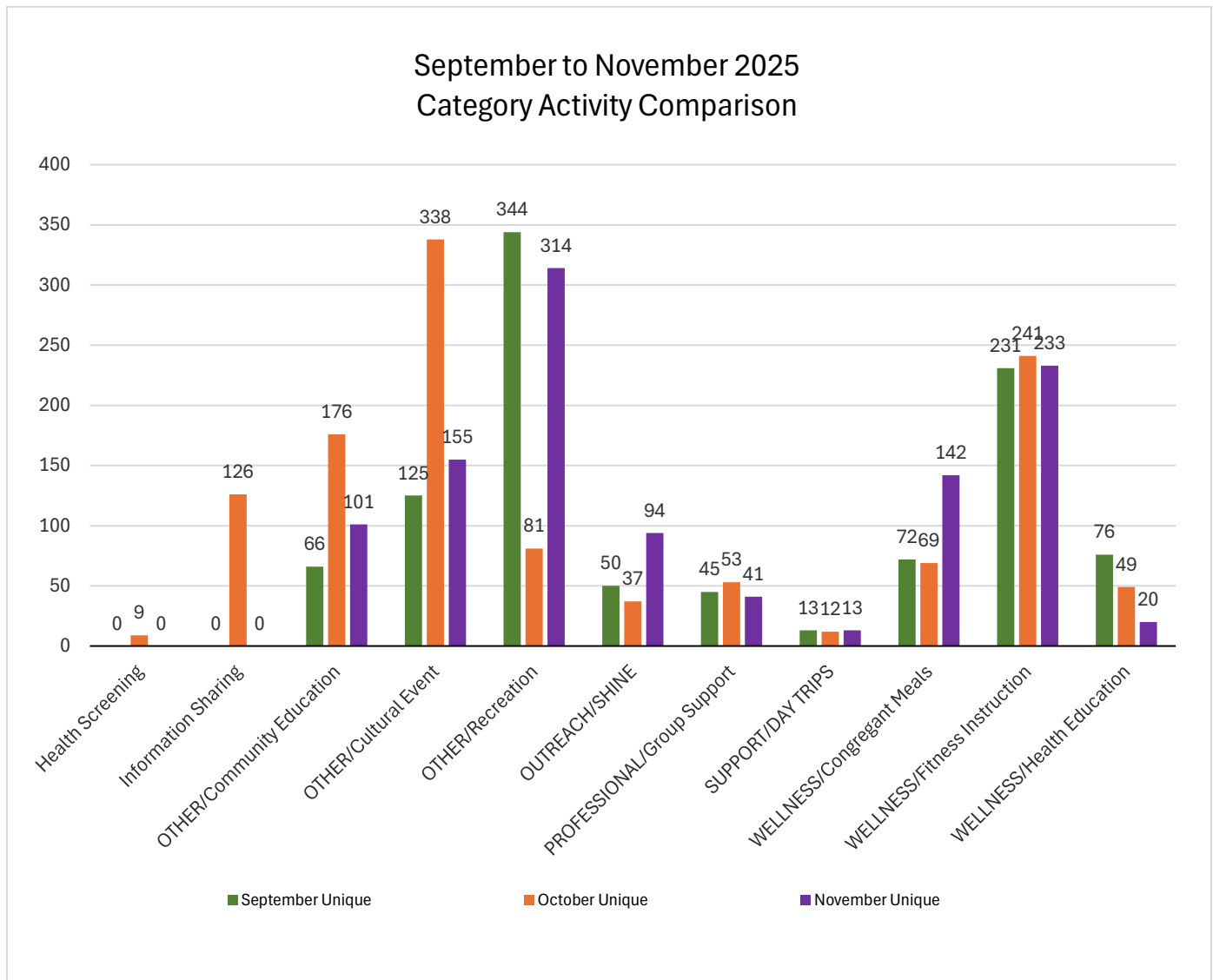
*Kathy Savage, Acting Director, submitted for December 18, 2025*

## Enrollment

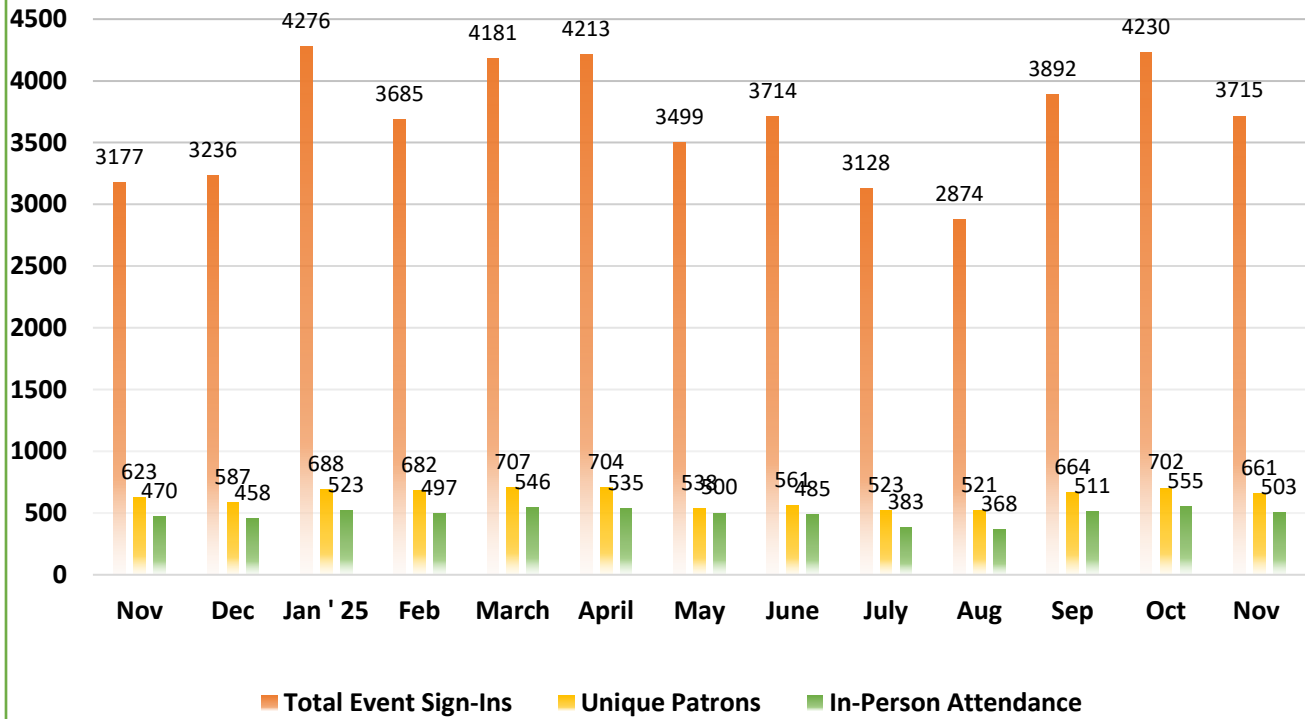
During November, the COA acquired 12 new patrons – 10 of whom are Wellesley residents and 2 are nonresidents. Of these, 6 are in the 60-69 age group, 3 are in the 70-79 age group, and 3 are in the 80+ age group. Additionally, 10 patrons are female, and 1 is male. Of the 711 patrons who participated in programming, 582 are Wellesley residents, and 129 are nonresidents.

## Actual Sign-Ups

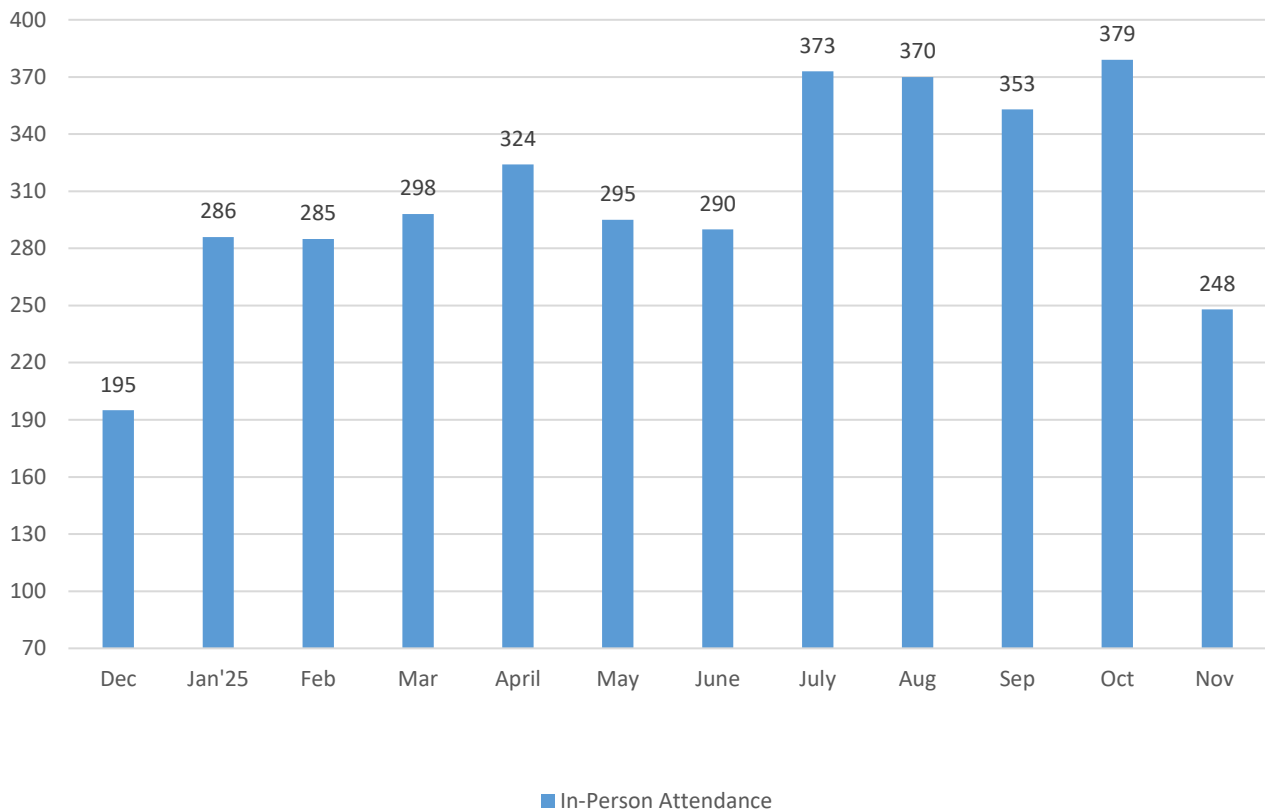
We had 3715 Total Event Sign-Ups with 661 total unique patrons for the month.



## # EVENT PARTICIPATION



## # Lunches



Event Capacity -- 11/01/2025 to 11/30/2025

Event Name	Resident	NonResident	Waitlist	Max Capacity	% Attended of Max Capacity
APT - SHINE - George	27	5	0	33	97%
APT - SHINE - Rochelle	15	10	0	28	89%
APT - Tuesday Tech Help Lois	3	1	0	8	50%
ART - Still Life Sketching	12	0	14	12	100%
ART - Swarovski Crystal Bracelet	5	1	2	6	100%
ART - Thanksgiving Cornucopia	8	0	1	9	89%
ART - Watercolor for All	16	0	8	18	89%
Bears Community Service	21	0	0	80	26%
Before the Mayflower	37	5	17	50	84%
BINGO	18	0	2	20	90%
Bridge	23	8	0	48	65%
BUS - Dollar Tree/Stop N Shop Natick	8	0	0	10	80%
BUS - Market Basket	6	0	0	8	75%
BUS - Walmart/Target	9	0	0	10	90%
Card Writing for Veterans at VA Hospital	17	1	0	40	45%
Cards and Games	8	33	0	180	23%
Cribbage	21	5	0	45	58%
Donuts and Coffee with Wellesley Police	13	0	0	20	65%
DRP - Drop In Knitting	7	23	0	45	67%
DRP - Drop In Painting	11	0	0	80	14%
FIT - All Levels Yoga	47	1	11	54	89%
FIT - Cardio Dance and Strength	36	2	0	57	67%
FIT - Chair Yoga - ZOOM	22	31	0	200	27%
FIT - Core and More	49	2	0	68	75%
FIT - Fit For Life	54	0	7	64	84%
FIT - Hi Low Fitness	46	0	0	60	77%
FIT - Seated Strength and Balance - ZOOM	90	3	0	300	31%
FIT - Tai Chi	65	5	2	90	78%
FIT - Total Body Sculpting - ZOOM	31	5	0	150	24%
FIT - Yoga for Better Balance	57	2	9	108	55%
Fitness Center	339	10	0	540	65%
FOD - Lunch	229	6	0	342	69%
Food Safety Program	22	2	0	35	69%
General Visit/Coffee/Library	365	54	0	900	47%
Great Jazz Singers Two Part Series	45	9	27	70	77%
GRP - All Abilities Knitting	14	4	1	42	43%
GRP - American Literary Classics Book Discussion	8	0	0	15	53%
GRP - Economy Watch: A Financial Discussion	7	2	6	10	90%
GRP - Experienced Knitting	18	2	0	42	48%
GRP - Great Poems Discussion	4	2	0	15	40%
GRP - Men in Retirement	26	13	1	48	81%
GRP - Shakespeare Discussion Group	8	4	0	15	80%
GRP - Social Connections	34	4	0	90	42%
GRP - Tell Us What You Are Reading Discussion	4	1	0	16	31%
GRP - The Afternoon Discussion Group	6	6	0	20	60%
GRP - Women in Retirement	3	4	0	12	58%
GRP - World History Book Discussion	5	0	0	15	33%
Keep Well Clinic	9	0	0	24	38%
Kev Tech - Uber and Lyft	34	5	3	40	98%
Larchmont Remembered	32	2	1	35	97%
Mah Jongg	24	12	0	45	80%
Meditation to Soothe the Soul	16	0	0	35	46%
Mexican Train Dominoes	11	1	0	32	38%
Monuments Memories - The Past on a Pedestal	26	7	0	40	83%
Movie - Air Force Elite Thundberbirds (2025)	20	3	0	35	66%
Movie - Moonstruck (1987)	10	3	0	35	37%

Event Name	Resident	NonResident	Waitlist	Max Capacity	% Attended of Max Capacity
Movie - My Oxford Year (2025)	27	6	0	35	<div><div>94%</div></div>
Movie - Thursday Murder Club (2025)	34	2	0	35	<div><div>103%</div></div>
Mysterious Dreamscapes of Salvador Dali (VIR)	37	8	0	55	<div><div>82%</div></div>
Photography Club	19	6	0	40	<div><div>63%</div></div>
Ping Pong	76	4	0	192	<div><div>42%</div></div>
Pool	89	47	0	270	<div><div>50%</div></div>
Scrabble	9	3	0	32	<div><div>38%</div></div>
Sing Along with Marie Brown	18	3	0	30	<div><div>70%</div></div>
SUP - Non-resident newsletter fee	0	0	0	20	<div><div>0%</div></div>
Thanksgiving Dinner	0	0	33	115	<div><div>0%</div></div>
The Duke	26	3	1	35	<div><div>83%</div></div>
Two Truths and a Lie	9	5	0	35	<div><div>40%</div></div>
Veterans Day Breakfast	10	2	0	15	<div><div>80%</div></div>
Walking Group	116	22	0	240	<div><div>57%</div></div>
<b>Total Duplicated</b>	<b>2,571</b>	<b>410</b>	<b>146</b>		
<b>Total Unduplicated</b>	<b>486</b>	<b>123</b>	<b>97</b>		

Created at 12/1/2025 12:25:08 PM

# Director's Report – November 2025 Recap

## Signature Event

### **Annual Thanksgiving Luncheon – Saturday, Nov 22 (12:00–2:00 PM)**

The November Signature Event was the Annual Thanksgiving Luncheon hosted off-site by the Wellesley Fire Department at the Wellesley Country Club. **115**

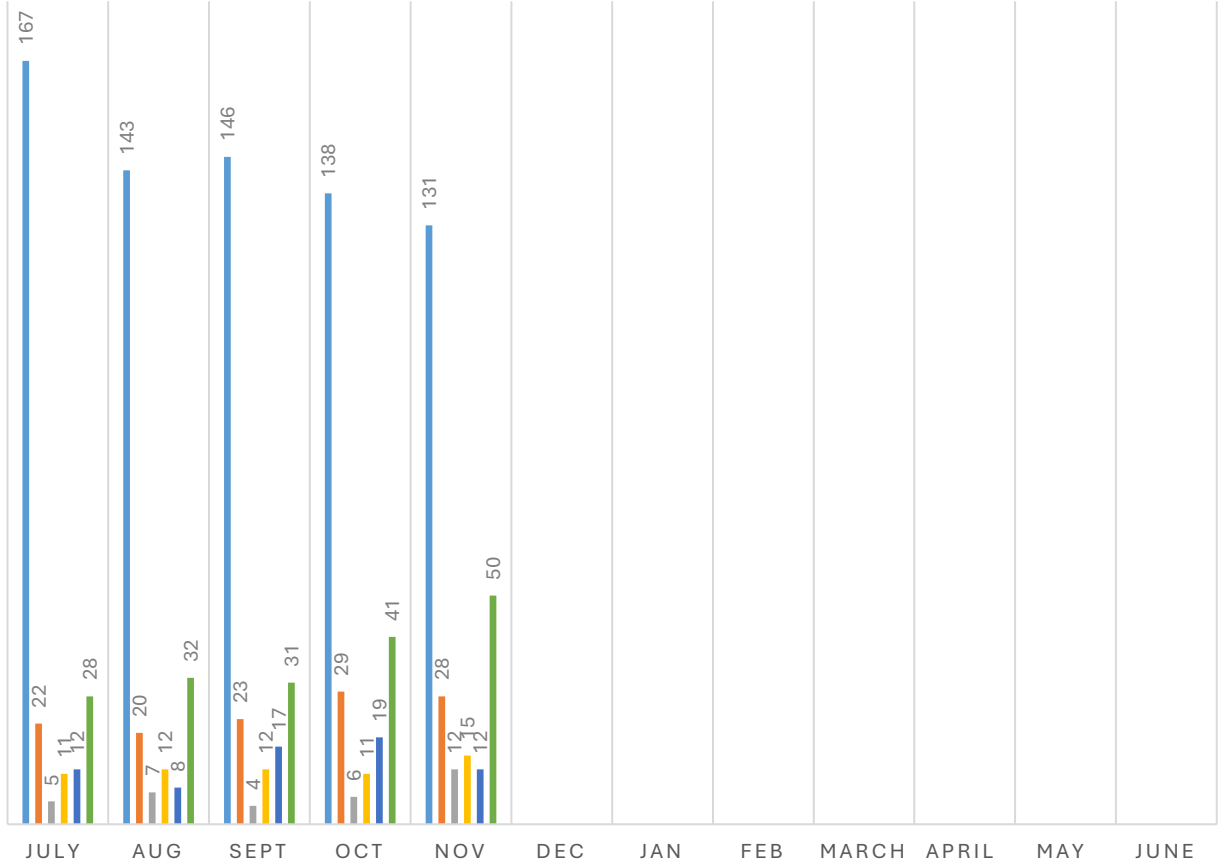
---

## Educational & Speaker Programs

- **Larchmont Remembered – Nov 5** provided a maritime-history overview presented by author Daniel Harrington, focusing on the sinking of the 1907 steamship Larchmont. **34 Patrons**
- **Flu Clinic – Nov 4**, coordinated by the Wellesley Health Department, provided immunization services to patrons, with walk-ins' welcome, and offered high-dose vaccine eligibility for adults aged 65 and over. **Non COA Event WHD tracked the number of shots.**
- **Therapy Gardens: Two Truths and a Lie – Nov 10** engaged participants in a brain-training game blending health, ethics, and surprise wildcard content, supporting cognitive stimulation. **14 Patrons**
- **Great Jazz Singers Series**, led by jazz journalist and historian Allen Morrison, included **Part One: 1920–1950 on Nov 13** and **Part Two: 1950–Present on Nov 24**. Both sessions incorporated film clips and audio to chart the evolution of jazz vocals, reinforcing demand for culturally anchored speaker series. 11/13, **27** 11/24 **27 Patrons**
- **Monuments, Memories, and Putting the Past on a Pedestal – Nov 18** examined monument narratives and history education presented by history educator Dan Osborne, supporting civic reflection and stimulating conversation. **33 Patrons**
- **Food Safety – Nov 20** The Wellesley Health Department gave a talk about food safety and the holidays. Each Patron in attendance received an oven thermometer and learned how to calibrate. **24**

## SOCIAL SERVICES: FY 2026

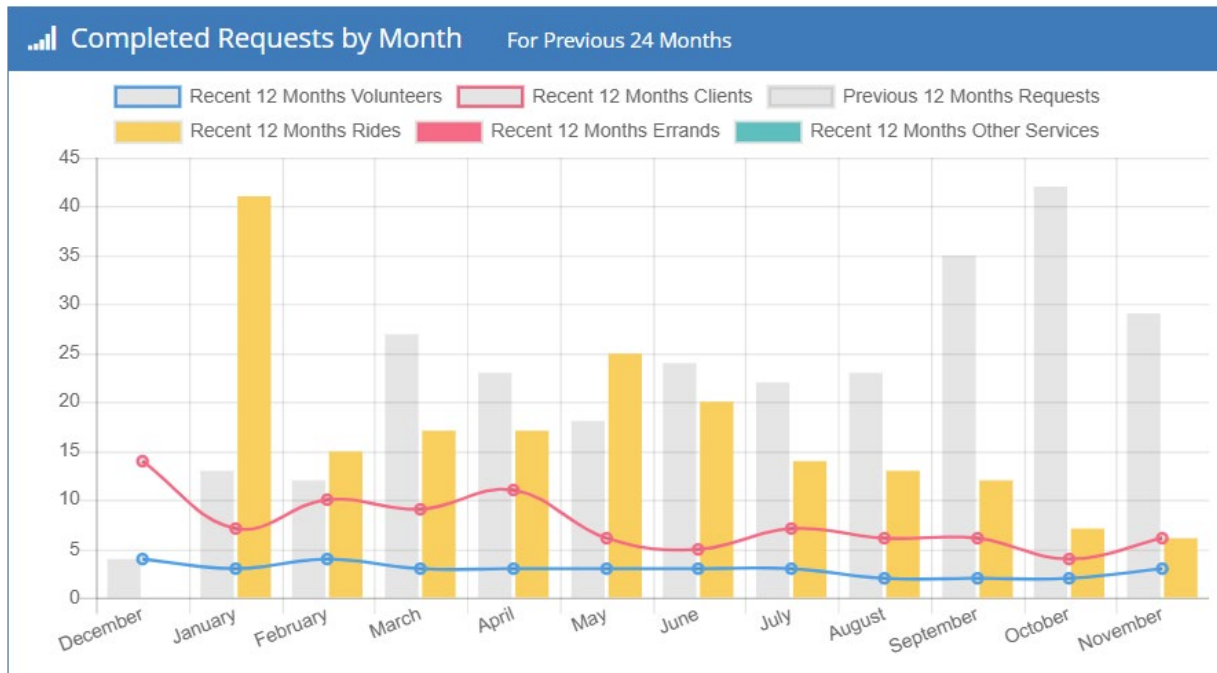
■ Groups ■ Phone ■ Home ■ Office ■ Email ■ Unduplicated



# Transportation Program NOVEMBER 2025

**Wellesley COA Bus 216 Rides with 47 Riders for November 2025**

**Volunteer Driver Program had 6 Requested Rides, and 6 Rides were Completed for November 2025.**



## Requests Summary



November 1, 2025 - November 30, 2025

### Rides



### Services

## GIFTS FROM OCTOBER 2025

\$773.65	Friends of the Wellesley COA	Coffee Subsidy October 2025
----------	------------------------------	-----------------------------

\$1,292.00	Friends of the Wellesley COA	Lunch Subsidy October 2025
------------	------------------------------	----------------------------

\$1,774.00	Almira Simons Fund	Simons Lunch October 2025
------------	--------------------	---------------------------

\$185.00	Almira Simons Fund	Programming/Scholarship October 2025
----------	--------------------	--------------------------------------

\$464.94	Friends of the Wellesley COA	Shake Shack Event 9/25/25
----------	------------------------------	---------------------------



## GIFTS FROM NOVEMBER 2025

\$100.00	Stan Pignone	General Donation
\$727.68	Friends of the Wellesley COA	Coffee Subsidy November 2025
\$755.00	Friends of the Wellesley COA	Lunch Subsidy November 2025
\$1,098.00	Almira Simons Fund	Simons Lunch November 2025
\$95.00	Almira Simons Fund	Programming/Scholarship November 2025

Task List  
COA Board Meeting  
November 20, 2025

1. Schedule Special Board Meeting on Zoom for FY27 Budget
  - Meeting was scheduled for Monday, November 24<sup>th</sup> at 4:00 pm for Budget Approval
  - Meeting scheduled on Monday, December 10<sup>th</sup> for UMASS Presentation
2. Add approval/VOTE of minutes for Board Retreat (October 15) and Board Meeting (October 16) to December Board Meeting agenda
  - Votes for Board Meeting on December 18, 2025
3. Add approval/VOTE of gifts for October and November to December Board Meeting agenda
  - Vote for Gifts for October 2025 on December 18, 2025, Board Meeting
4. Add approval/VOTE of Patron Participation/Code of Conduct policy to December Board Meeting agenda
  - Vote for December 18, 2025, Board Meeting
5. Review of CSS recommendations for Strategic Plan
  - Ongoing